



## **SYNDICATE OVERSEAS**

**Merchant Exporters of Automobiles**

12,13,14,15 Nav Bharat CHS ,  
Juhu Lane ,  
CD Barfiwala Marg,  
Maharashtra, Mumbai 400058. India

email: [exports@syndicateoverseas.net](mailto:exports@syndicateoverseas.net)  
Phone: +91 9029062626

**Website : [syndicateoverseas.co.in](http://syndicateoverseas.co.in)**



# ABOUT US



**SYNDICATE OVERSEAS**  
Merchant Exporters of Automobiles



## SYNDICATE OVERSEAS

Syndicate Overseas is one of the promising Exporters and Suppliers of a wide variety of products such as Motorcycle, scooter Three wheeler, Bus, Branded MRF tyres

We have the exports of automobiles in the name Syndicate overseas to USA, CANADA, BRAZIL, AFRICA, SRI LANKA AND MIDDLE EAST.

We are an Authorized Merchant exporters of PIAGGIO, VESPA, APRILIA , TATA, GREAVES COTTON, MRF TYRES. & Merchant exporter of all Branded Two Wheelers , Branded Three Wheelers (TVS Bajaj D+5, Bajaj, Fleek, Syndicate Brand) Buses & Trucks (Tata, Eicher, Ashok Leyland,) Coolant, Spare Parts (Original Parts)

# BAJAJ THREEWHEELER



**SYNDICATE OVERSEAS**  
Merchant Exporters of Automobiles



Power	7.6 KW at 5000 rpm
Torque	17Nm at 3500 rpm
Cubic Capacity	198.88 cc
Transmission	4 forward + 1 reverse gear
Clutch	Wet multidisc type
Engine Type	4 Stroke
Kerb weight	348 Kg
Wheel Base	2000 mm
Overall width	1300 mm

# TVS THREE WHEELER



**SYNDICATE OVERSEAS**  
Merchant Exporters of Automobiles



## TVS King Petrol Auto Rickshaw Specifications

<b>Engine Type</b>	4 stroke single cylinder forced air-cooled spark ignition (ISI) engine
<b>Displacement</b>	199.26cc
<b>Max Power</b>	7.37bhp @ 5000rpm
<b>Max Torque</b>	12.9Nm @ 3250rpm
<b>Bore x stroke</b>	62mm x 66mm
<b>Max speed</b>	NA
<b>Lubrication</b>	Positive displacement type oil pump
<b>Fuel system</b>	Side draft carburetor with a valve mechanism
<b>Starting</b>	Electric and hand start
<b>Ignition</b>	High energy inductive ignition
<b>Gradeability</b>	7.0 degrees
<b>Chassis</b>	Semi monocoque
<b>Gears &amp; transmission</b>	4 forward and 1 reverse speed constant mesh
<b>Dimensions (length x width x height)mm</b>	2645 x 1330 x 1740 mm
<b>Mileage</b>	NA
<b>Ground clearance</b>	165mm
<b>Tyres</b>	4.00 – 8
<b>Kerb weight</b>	385kg
<b>Min Turning Circle Radius</b>	NA
<b>Ground clearance</b>	165mm
<b>Wheelbase</b>	1985mm
<b>Wheel track</b>	1150mm
<b>Fuel Tank</b>	Petrol: 2.7 ltrs
<b>Fuel type</b>	Petrol
<b>Front Suspension</b>	Trailing arm type, constant rate coil spring with coaxial hydraulic damper
<b>Rear suspension</b>	Trailing arm type, constant rate coil spring with coaxial hydraulic damper
<b>Brakes Front and rear</b>	Drum, hydraulic

# PIAGGIO THREE WHEELER



**SYNDICATE OVERSEAS**  
Merchant Exporters of Automobiles



## SMART SPECIFICATIONS

<b>Engine</b>	Displacement (CC)	LPG 197	CNG 197
	Cylinders (No.)	1	1
	Max. Output of engine (HP @ rpm)	10.56 (7.88 Kw) @ 5100 ± 200 rpm	9.65 (7.2 Kw) @ 5400 ± 200 rpm
	Max. Torque (NM @ rpm)	16.88 Nm @ 3200 ± 200 rpm	15.27 Nm @ 3200 ± 200 rpm
<b>Clutch</b>	Types	Multi Plate	Multi Plate
<b>Gear Box</b>	Types and No. of Gears	Constant Mesh, 4 Forward and 1 Reverse	Constant Mesh, 4 Forward and 1 Reverse
<b>Brakes</b>	Types	Hydraulically Actuated	Hydraulically Actuated
	Front Rear	Drum Drum	Drum Drum
<b>Tyre</b>	Size	4.0 X 8 4/6 PR	4.0 X 8 4/6 PR
<b>Features</b>	Wheel Base (MM)	1920	1920
	Total Width (MM)	1370	1370
	Total Height (MM)	1725	1725
	Total Length (MM)	2700	2700
	Min. Ground Clearance (MM)	160	160
<b>Other Information</b>	Battery Rating (Ah)	35	35
	Seating Capacity	Driver + 3 Passengers	Driver + 3 Passengers
	Fuel Tank Capacity (Ltr.)	LPG : 18 & 13 Ltr. Water capacity Petrol : 3.0 Ltr	CNG : 30 & 40 Ltr. Water capacity Petrol : 2.5 Ltr
<b>Capability</b>	Speed Index (km/hr)	70 / 76	70 / 76
	Maximum Gradability (%)	20.43%	21.47%
<b>Weight</b>	G.V.W. (Kgs)	695	695
	Kerb Weight (Kgs)	394	413



**A SMART CHOICE!**

### SMART COLOURS



Authorised Dealer:



**PIAGGIO VEHICLES PRIVATE LIMITED**  
8th Floor, Sky One, Kalyani Nagar, Pune - 411006.

## STRONG BODY COMPLETE SAFETY

Strong Monocoque Chassis and a Robust Metal Sheet ensures a smart and safe drive even on bad roads and increases its life span. Better Suspension and Solid Shock Absorbers promise a super smooth and comfortable driving experience. It won't ask for frequent greasing due to maintenance-free Flexible Couplings. It will save your time and money. Come and experience a smart drive with the New Ape City.

## SMART DRIVE MORE COMFORT

Ape City promises comfortable and pleasant drive with a perfectly positioned inclined driver seat. It offers more headroom and a broader view with an extra-wide windshield. Car-like braking system and smoother clutch take care of all your worries. It offers a well-cushioned and broad passenger seat. Go ahead, begin a journey of comfortable drives for you and your esteemed passengers.

## SMART ENGINE UNMATCHED PERFORMANCE

Ape City is India's First 3 Wheeler with 3 Valve Italian Technology and a 4 Stroke Engine. This technology utilizes each drop of fuel and gives you an uninterrupted performance. This results into More Mileage, More Power, More Pick-up and a longer Engine Life. Go ahead, be unstoppable at every turn.



- 4-Stroke Aluminum Engine - Less Noise and Reduced Heat
- High Capacity Starter Motor - Longer Life
- Highest Power & Pick-up in its class



Trusted 3 Valve Italian Technology for More Mileage & Unmatched Performance.



• Comfortable Driver Seat • Maximum Passenger Space



• 2 Million Satisfied Customers Globally



• Clear Transparent Headlamp • Provision for Music System • Mobile Charger • Coin Holder

## MODERN STYLE SMART FEATURES

Ape City steals your heart with an exciting range of features like Stylish Dashboard, Italian Speedometer, Mobile Charger, Provision for Music System & Speakers and Coin Holder. Stylish Bumper and Clear Transparent Headlamps make the drive even more exciting. Move on, let the style with stunning smart features make you stand out amongst your peers.

## MORE EARNINGS HAPPY FAMILY

Piaggio Vehicles are known for superior earnings and Ape City will further strengthen this belief. It promises more earnings with High Mileage and Lowest Maintenance in its class. It offers a Super Saver Scheme with Free Maintenance for a Year\*. And with over 4000 Sales & Service Facilities across India, be sure that your Ape City is always on the move to help you earn more. Go on, begin a happy and prosperous family life with the New Ape City.



## Technical Specification

### Engine

**Max Power**

Type = Single Spark, 4 - stroke  
Petrol = 8.1 @ 5000 +/- 250 (Kw @ RPM)

**Max Power**

Type = Single Spark, 4 - stroke  
Petrol = 18.0 @ 3500 +/- 250 (Nm @ RPM)

Max. Speed = 65 km/h  
Displacement = 198.88 cc  
Clutch = Wet multidisc type

### Vehicle

Frame Type = 65 km/h  
Length x Width x Height = 2637 mm x 1301 mm x 1705 mm  
Wheel Base = 2000 mm  
Ground Clearance = 200 mm  
Kerb Weight = 337 Kgs.  
Fuel Tank (Reserve / Usable) = Petrol (8+1.5)/LPG, 16.5+3)/CNG(4+3) liter,  
Suspension Type = Double Acting Hydraulic  
Shock = Absorber

### Key Features

Model = 2018.  
Fitted with steel bumper  
FM Radio with 2 Speakers / USB Charger / Water Bottle Holder  
Color = as per customer requirement  
Painting done by CED coating technology with 12 tank process  
100% Made in India

# HIRVI ELECTRIC THREE WHEELER



**SYNDICATE OVERSEAS**  
Merchant Exporters of Automobiles



THE ALL-NEW 2019 HIRVI

**100% ELECTRIC**

**NOW AVAILABLE**

- 20% Gradient**
- High Speed**
- Higher Acceleration**
- More Mileage**
- Great Loading Capacity**

**WARRANTY**

Motor	1 Year
Controller	1 Year



<b>Battery</b>	48 Vdc, 128 Ahr
<b>Type</b>	Lithium Ion
<b>Electricity Consumption</b>	6 Units
<b>Charging Time</b>	4 Hour, Optional 2 Hours
<b>Motor</b>	BLDC
<b>Driving Range</b>	120 Km
<b>Power</b>	6000 Watts Peak
<b>Maximum Speed</b>	60 Km/hr
<b>Controller</b>	Advanced Sinusoidal FOC
<b>Charger</b>	30 Amp Optional 60 Amp
<b>Optional Emergency Petrol Generator</b>	1.2 KW Power

# D+5 THREE WHEELER



**SYNDICATE OVERSEAS**

Merchant Exporters of Automobiles



## SPECIFICATIONS

Basic model D+5

Type / Description 3-Wheeler Passenger

### Engine

Greaves Cotton Limited,  
Model G435 A IV

Type Single Cylinder Naturally Aspirated Air-Cooled

Compression ratio 19:1 ( $\pm 0.5\%$ )

Max. Engine output (kW @ rpm) 6.0 kW @ 3600 rpm

Max. Torque (Nm @ rpm) 21 Nm @ 2400 - 2200 rpm

Air cleaner type Dry type

### Clutch

Type Wet, Plate type

### Gear box

Type Constant Mesh Type

### Fuel tank

Material CRC

Capacity (l) 11 Lt

### Dimensions

 BAXY Express Passenger Carrier Super D

Wheel base (mm) 2100

Overall width (mm) 1465

Overall length (mm) 3120

Overall height (mm) 1970

Front track (mm) NA

Rear track (mm) 1260

Min. ground clearance (mm) 175

Cargo



# PIAGGIO APE CARGO



**SYNDICATE OVERSEAS**  
Merchant Exporters of Automobiles



Widest Range in 3w Cargo Segment in India



**apé**  
HIGH BODY



**Ape**  
Xtra LDX



**Ape**  
City XTRA

## Technical Specifications

<b>Engine</b>				
Type	Single Cylinder, Naturally Aspirated Air Cooled			
Displacement	435.6 cc			
Max Power	8.04 HP (6 kW) @ 3600 rpm			
Max Torque	21 Nm @ 2400-2200 rpm			
<b>Clutch Type</b>	Multi Disc, Wet type			
<b>Gear Box Type</b>	Constant Mesh (4 Forward, 1 Reverse)			
<b>Suspension</b>				
Front	Helical spring with dampener			
Rear	Rubber spring with dampener			
<b>Brakes</b>	Drum brakes hydraulically actuated internal expanding shoe type			
<b>Fuel tank capacity</b>	10.5 Litres			
<b>Weight (in Kg)</b>	<b>Xtra PV</b>	<b>Xtra DV</b>	<b>Xtra HB</b>	<b>Xtra LDX</b>
GVW	975	975	975	975
Kerb Weight	415	440	435	438
Rated Payload	560	535	540	537
<b>Performance</b>				
Maximum Gradeability	25.21%			



Authorised Dealer:

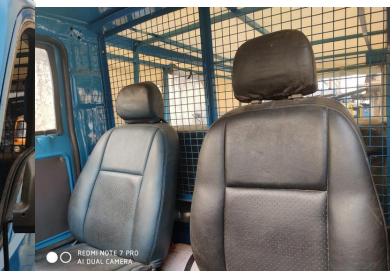


# VINAYAK PASSENGER VEHICLE



**SYNDICATE OVERSEAS**

Merchant Exporters of Automobiles



## FOUR WHEELERS TECHNICAL SPECIFICATION

Engine	
Type	Single Cylinder-Air cooled
No. of cylinders	Single
Displacement	436 cc / 400 CC Petrol
Max. Power, kW@rpm	7.5 bhp@3600rpm
Max. Gradeability in Ist Gear	7
Clutch Type	Multi Plate Wet Type
Gear Box	Constant Mesh Gearbox with 4 forward and 1 reverse
Suspension	
Front	Leaf Spring with telescopic shock absorber
Rear	Rubber Compression Spring with hydraulic telescopic shock absorber
Steering	Steering wheel
Brakes	Drum Brakes

# FOUR WHEELERS TECHNICAL SPECIFICATION



**SYNDICATE OVERSEAS**  
Merchant Exporters of Automobiles

<b>Tyre Size</b>	<b>4.5x10, 8 PR</b>
<b>System voltage</b>	<b>12DC</b>
<b>Battery Rating, Ah</b>	<b>50 Ah</b>
<b>Wiping</b>	<b>Electrically Operated</b>
<b>Fuel Tank Capacity</b>	<b>10 Ltr</b>
<b>DIMENSIONS</b>	
<b>Wheel base, mm</b>	<b>1800</b>
<b>Overall width</b>	<b>1455</b>
<b>length</b>	<b>3000</b>
<b>height</b>	<b>1910</b>
<b>Min. ground clearance</b>	<b>180</b>
<b>WEIGHTS</b>	
<b>max GVW, kg</b>	<b>1140</b>
<b>Kerb Weight</b>	<b>860</b>
<b>SeatingCapacity</b>	<b>D+3;D+4;D+6</b>



## **SYNDICATE OVERSEAS**

**Merchant Exporters of Automobiles**

**Inquiries: [exports@syndicateoverseas.net](mailto:exports@syndicateoverseas.net)**

**Additional information: [manpreetsinghchadha@hotmail.com](mailto:manpreetsinghchadha@hotmail.com)**

**Whatsapp number :+91 9372703792**